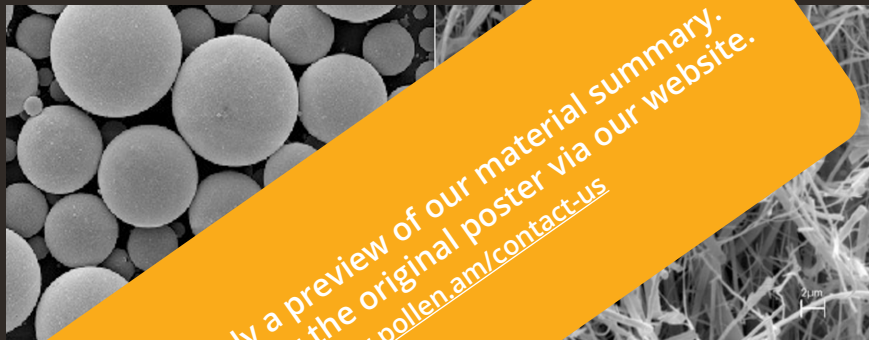


GLASS

Glass can be used as a filler in the form of fiber, it is then a so-called reinforcing filler, of hollow glass beads or of microspheres, making it possible to improve the performance of the polymer matrix or to reduce the mass of the parts produced.



This is only a preview of our material summary.
You can order the original poster via our website.
www.pollen.am/contact-us

| FILLER | PROPERTIES |
|--------------------|---|
| Glass fibers | Reinforcing agents. |
| Hollow glass beads | Improve resistance to water and aging Increases Young's modulus in compression. |
| Glass microspheres | Facilitates the filling of the mold. 25 to 35% reduction in the mass of the parts obtained. |