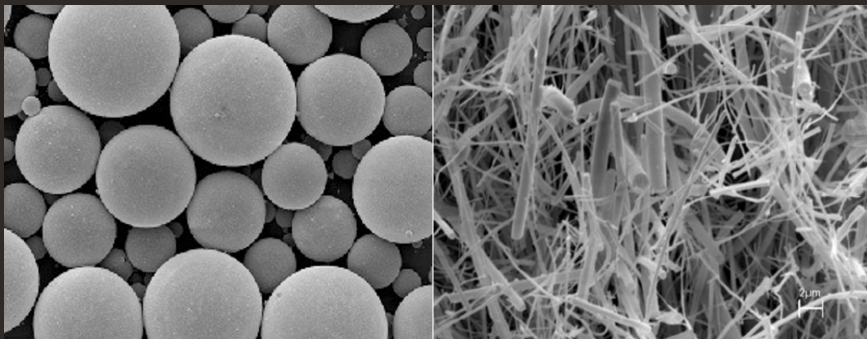


GLASS

Glass can be used as a filler in the form of fiber, it is then a so-called reinforcing filler, of hollow glass beads or of microspheres, making it possible to improve the performance of the polymer matrix or to reduce the mass of the parts produced.



FILLER	PROPERTIES
Glass fibers	Reinforcing agents.
Hollow glass beads	Improve resistance to water and aging Increases Young's modulus in compression.
Glass microspheres	Facilitates the filling of the mold. 25 to 35% reduction in the mass of the parts obtained.